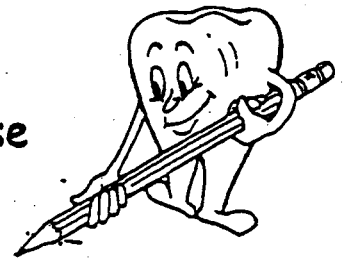
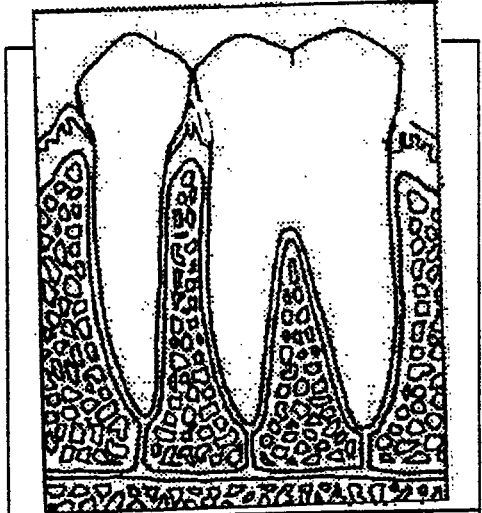


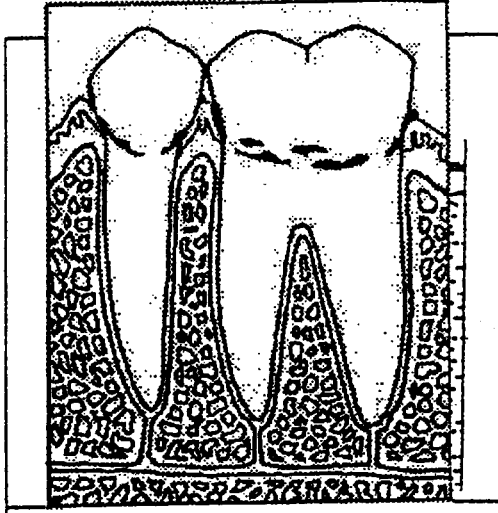
# The Story of Periodontal (Gum) Disease



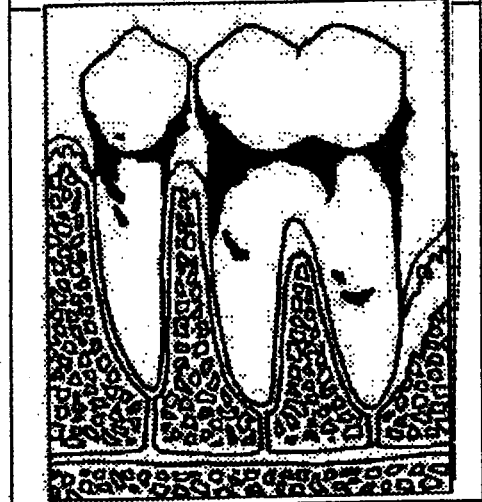
## ANSWER SHEET



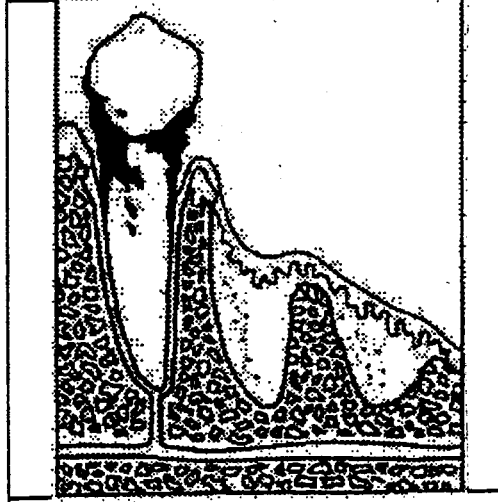
1) **Healthy Gums**  
Light in colour, fit snugly to the tooth & do not bleed.



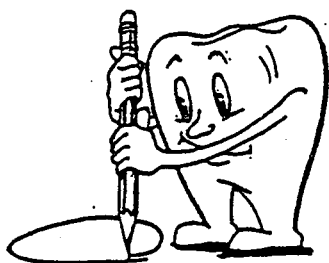
2) **Gingivitis**  
Puffy, sore gums that bleed during brushing



3) **Tooth Loss**  
Loss of bone and fibres that support the tooth in the socket



4) **Tooth Loss**  
The end result of gum disease



Key

	Calculus + Plaque
	Gum
	Bone

